

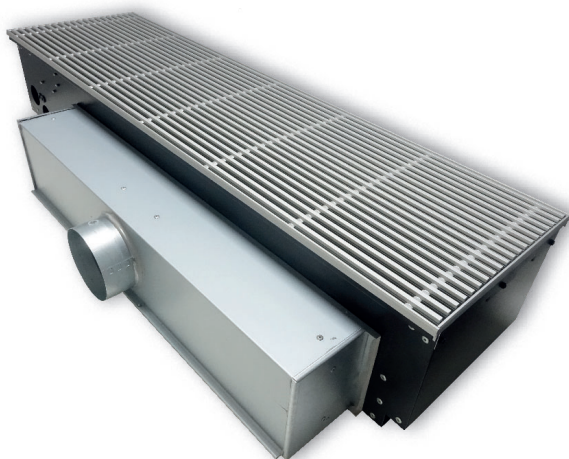
Perfect for air conditioning of outer zones
with façade glazing

Floor-mounted induction unit HFB/HFBsf



smart
flow

system
design



Compact and powerful.
Flexible and efficient.

- Optimum comfort and energy efficiency for different load situations by LTG System SmartFlow
- Demand-controlled ventilation (optional) for all applications; easy change of use possible
- High output reserve due to condensing operation
- With LTG SystemDesign: for a consistent look in all rooms, even with combination of different ventilation and air conditioning systems in the false floor
- Simplified maintenance via the floor grille and easy access to heat exchangers



Air-Water Systems

Floor-mounted induction unit HFB / HFBsf System SmartFlow

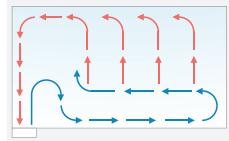
Application

Compact induction unit for ventilating, heating or/and cooling occupied zones (perimeter zones) with varying loads and transient load changes.

Characteristics

- **Acoustics**
 - Aerodynamically shaped nozzles for lower sound level and higher induction
 - Closed housing of sheet steel, thickness 1.5 resp. 2.5 mm, to avoid sound transmission into adjacent rooms
 - High cross-talk attenuation.
- **Performance and efficiency**
 - Optimized dimensioning for users due to flexible primary air flow rates.
 - High natural convection when heating without the use of primary air (e.g. when heating at night with the ventilation turned off)
 - Condensing operation is possible.
- **Room air flow**
 - Air guiding elements for optimized, patented LTG mixed displacement air ventilation, adjustable to a variety of room geometries.
- **Design**
 - Primary air balancing via floor grid possible.
 - Sturdy design and corrosion protected housing, for long operating times.
 - Flexible modular unit design. Conversion according to tenant's requirements (heating, ventilating, cooling).
 - Combined air inlet / air outlet grille not requiring any additional return air grilles.

Product data

Functions	Cooling / heating	■ / ■
	Fresh air supply	□
	Dehumidification	■
Technical data	Max. cooling output	up to 1500 W ²⁾
	Max. heating output ³⁾	up to 1500 W
Dimensions	[L x B x H in mm]	1020-1450 x 332 x 191
Air diffusion		

■ Standard □ optional on request

- 1) Bei 16 °C cold water inlet / 27 °C intake temp. / 18 °C primary air
- 2) Bei 6 °C cold water inlet/ 27 °C intake temp. / 18 °C primary air
- 3) Bei 55 °C hot water inlet / 20 °C intake temp. / 18 °C primary air

LTG System *SmartFlow*

The LTG System *SmartFlow* offers best comfort and energy consumption even under changing load stations. The ideal flow form is selected depending on required cooling output and fresh air volume. For this, the air nozzles are opened and the cold water valves are controlled. This ensures best comfort, acoustics and energy efficiency for any load case with a single device. Manual (different room use) or automatic (occupancy or CO₂-controlled) regulation is possible. In contrast to conventional induction technology, this permits adjustment of cooling output and fresh air supply to the specific requirements.

