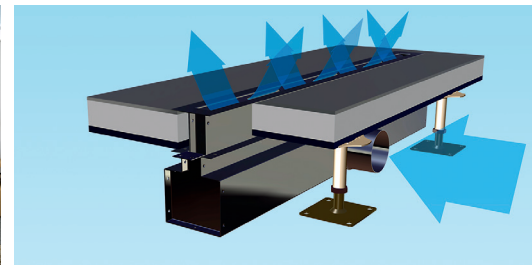


# LTG floor diffusers for all applications

## Floor mounted air diffuser LDU



Highly inductive LDU floor linear diffuser heats and cools comfortably and draught-free.



- **Quiet and draught-free** with highly efficient ventilation
- **Energy efficient** due to thermal shielding of glass facades
- **A unified look** meets exacting demands for attractive design
- **Ideal for raised access floors and hollow floors**, easy to mount
- **Easy to clean and maintain** thanks to flexible exhaust grille design, removable dirt trap and air distribution plates

## Air Diffusers

### LTG floor-mounted linear diffuser type LDU

LDU floor-mounted linear diffusers provide high-induction mixing of the supply air with individual jets parallel to the facade. The LDU floor-mounted air diffuser has been designed to condition office and conference rooms as well as entrance halls.



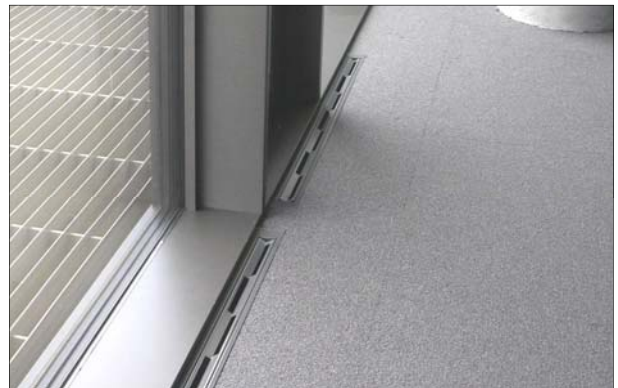
*Floor-mounted linear diffuser type LDU, lateral air connection*



*Floor-mounted linear diffuser type LDU, air connection from below*



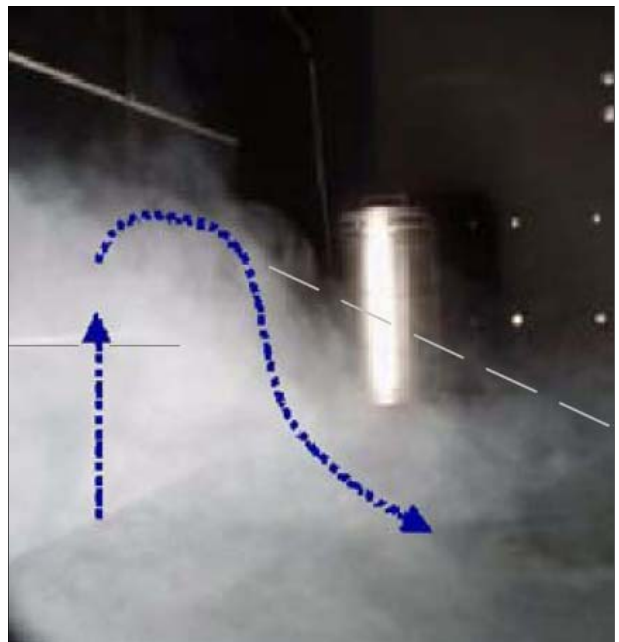
*Floor-mounted linear diffuser type LDU, for pressurized floors*



*Installation example*

### Features

- Draught-free air flow thanks to high-inductive fanning out into individual air jets, permitting personnel to enter the discharge area.
- High ventilation effectiveness thanks to ventilation directly in the accessible area.
- Excellent room heating and shielding of glass facades.
- Simple and time-saving maintenance thanks to the air outlet being removable at any time.
- Easy air quantity regulation thanks to integrated throttle valves as standard.
- Easy integration into floating floors and hollow floors.



*LTG mixed / displacement air ventilation*