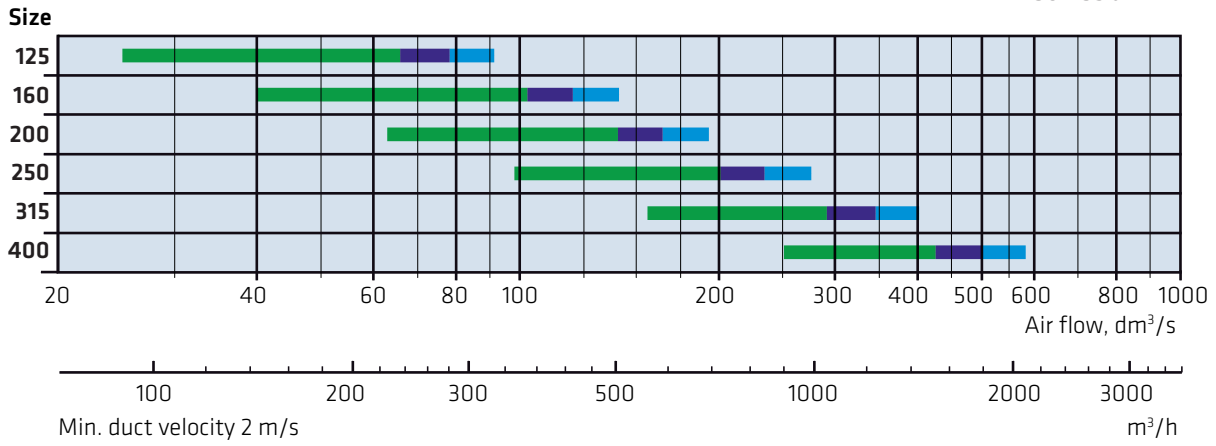


Displacement diffuser DINO-R

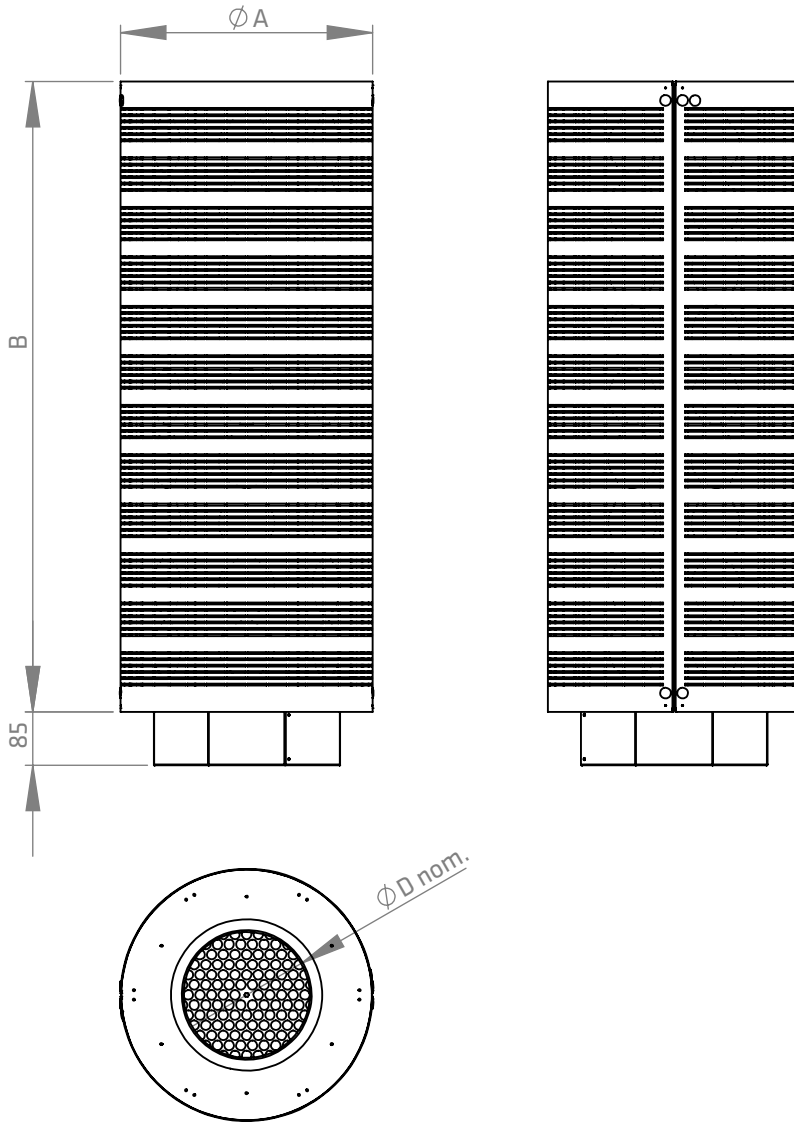
DINO-R Quick guide

- < 25 dB
- 25 - 30 dB
- 30 - 35 dB



Displacement diffuser DINO-R

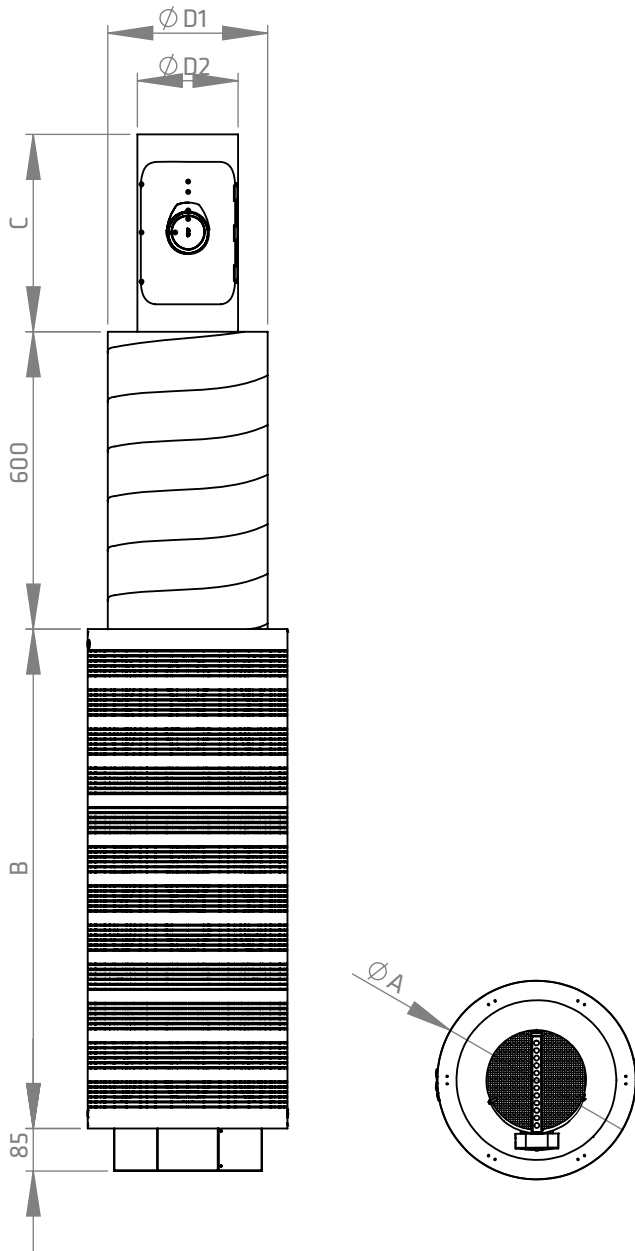
Main dimensions



| Size | $\varnothing A$ | B | $\varnothing D \text{ nom.}$ | Weight/kg |
|------|-----------------|------|------------------------------|-----------|
| 125 | 300 | 600 | 125 | 8,5 |
| 160 | 300 | 600 | 160 | 8,5 |
| 200 | 440 | 1000 | 200 | 19 |
| 250 | 440 | 1000 | 250 | 19 |
| 315 | 470 | 1500 | 315 | 30 |
| 400 | 570 | 2000 | 400 | 48 |

Displacement diffuser DINO-R

Main dimensions, Duct parts

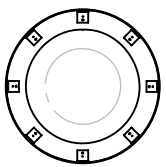
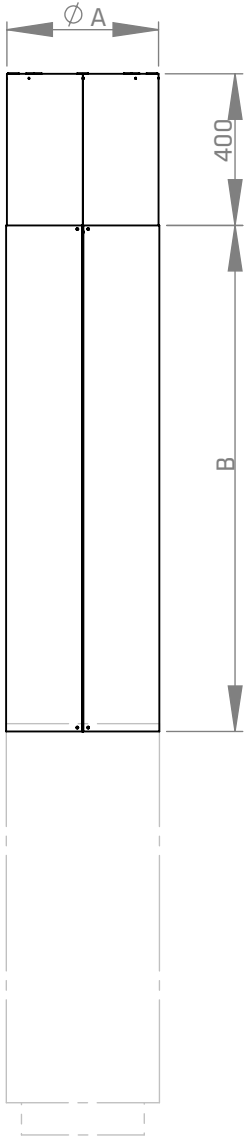


| Size | ØA | B | C | ØD1 | ØD2 nom. | Weight/kg |
|------|-----|------|-----|-----|----------|-----------|
| 125 | 300 | 600 | 340 | 230 | 125 | 14,5 |
| 160 | 300 | 600 | 365 | 285 | 160 | 17 |
| 200 | 440 | 1000 | 395 | 320 | 200 | 29,5 |
| 250 | 440 | 1000 | 435 | 370 | 250 | 32 |
| 315 | 470 | 1500 | 485 | 415 | 315 | 46,5 |
| 400 | 570 | 2000 | 210 | 515 | 400 | 68 |

NB! In size 400 the damper is DIRIS.

Displacement diffuser DINO-R

Main dimensions, Duct cover

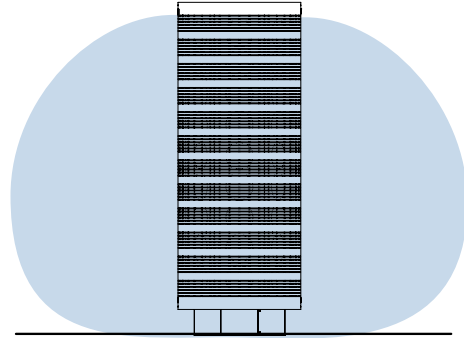
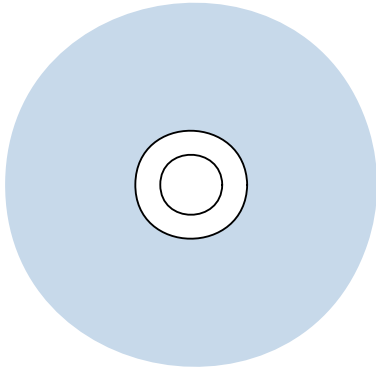


| Size | $\varnothing A$ | B | Ceiling height/mm | Duct cover weight/kg |
|------|-----------------|------|-------------------|----------------------|
| 125 | 300 | 1735 | 2400-2800 | 17,5 |
| 160 | 300 | 1735 | 2400-2800 | 17,5 |
| 200 | 440 | 1335 | 2400-2800 | 19 |
| 250 | 440 | 1335 | 2400-2800 | 19 |
| 315 | 470 | 1335 | 2900-3300 | 22 |
| 400 | 570 | 1335 | 3400-3800 | 27 |

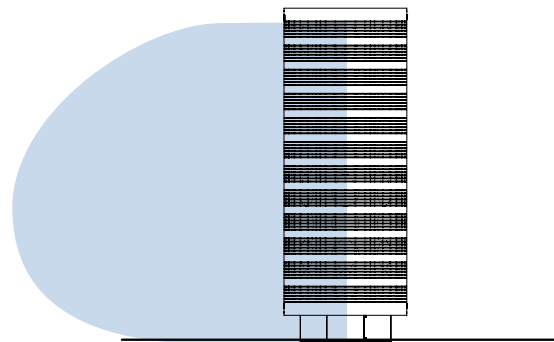
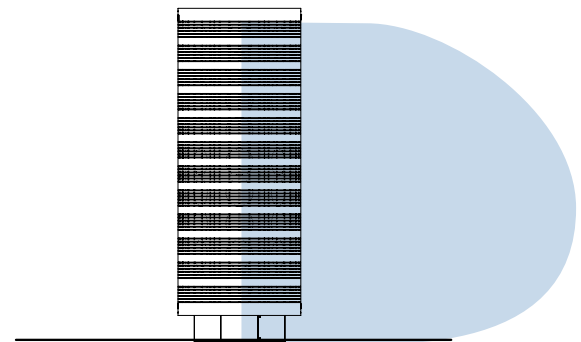
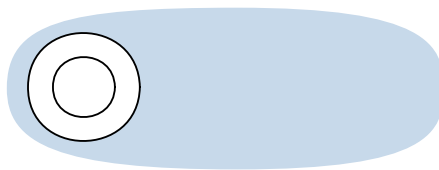
Displacement diffuser DINO-R

DINO-R throw pattern can be changed

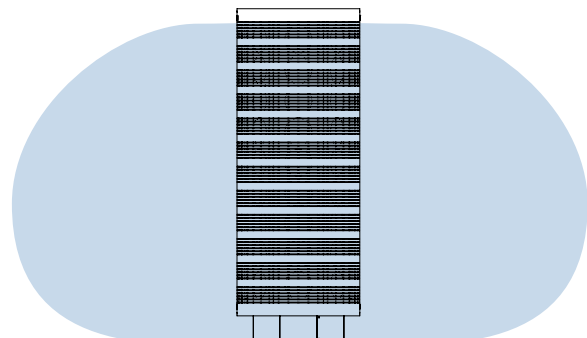
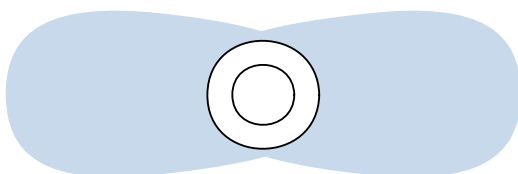
Throw pattern 360°



Sideways distribution pattern

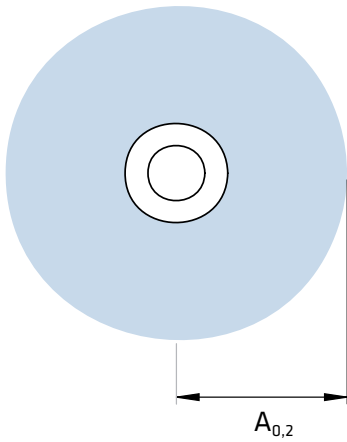


Throw pattern directed to the sides

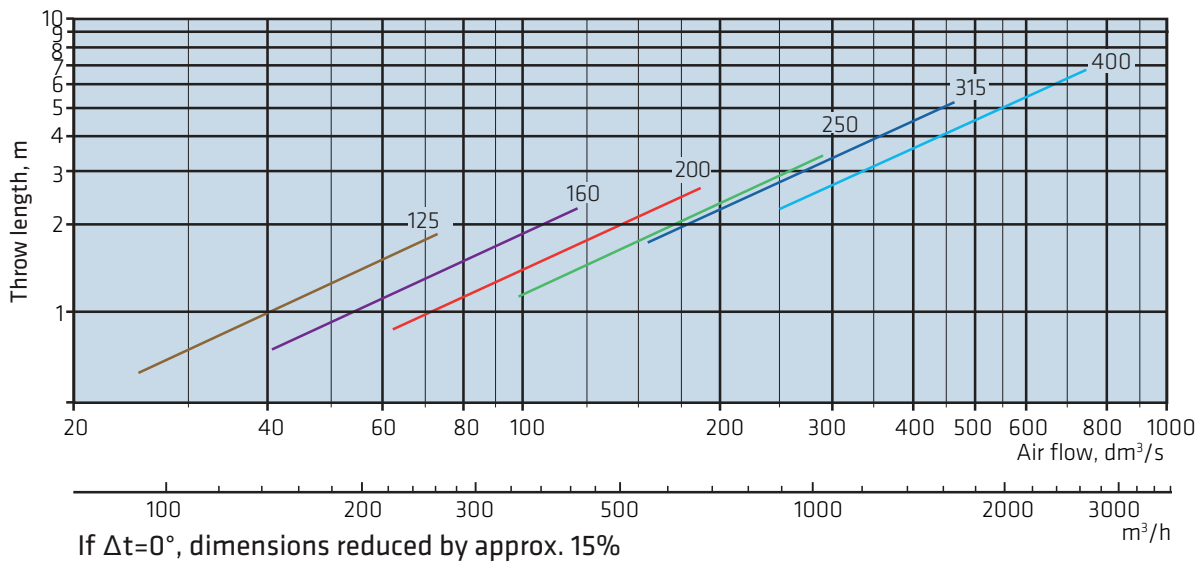


Displacement diffuser DINO-R

Throw pattern graphs



DINO-R Affected area ($L_{0,2m}$), $\Delta t = -3$, Duct velocity 2-6 m/s

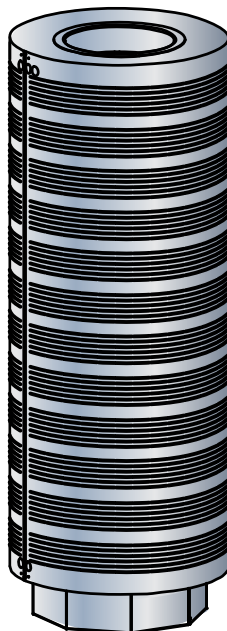
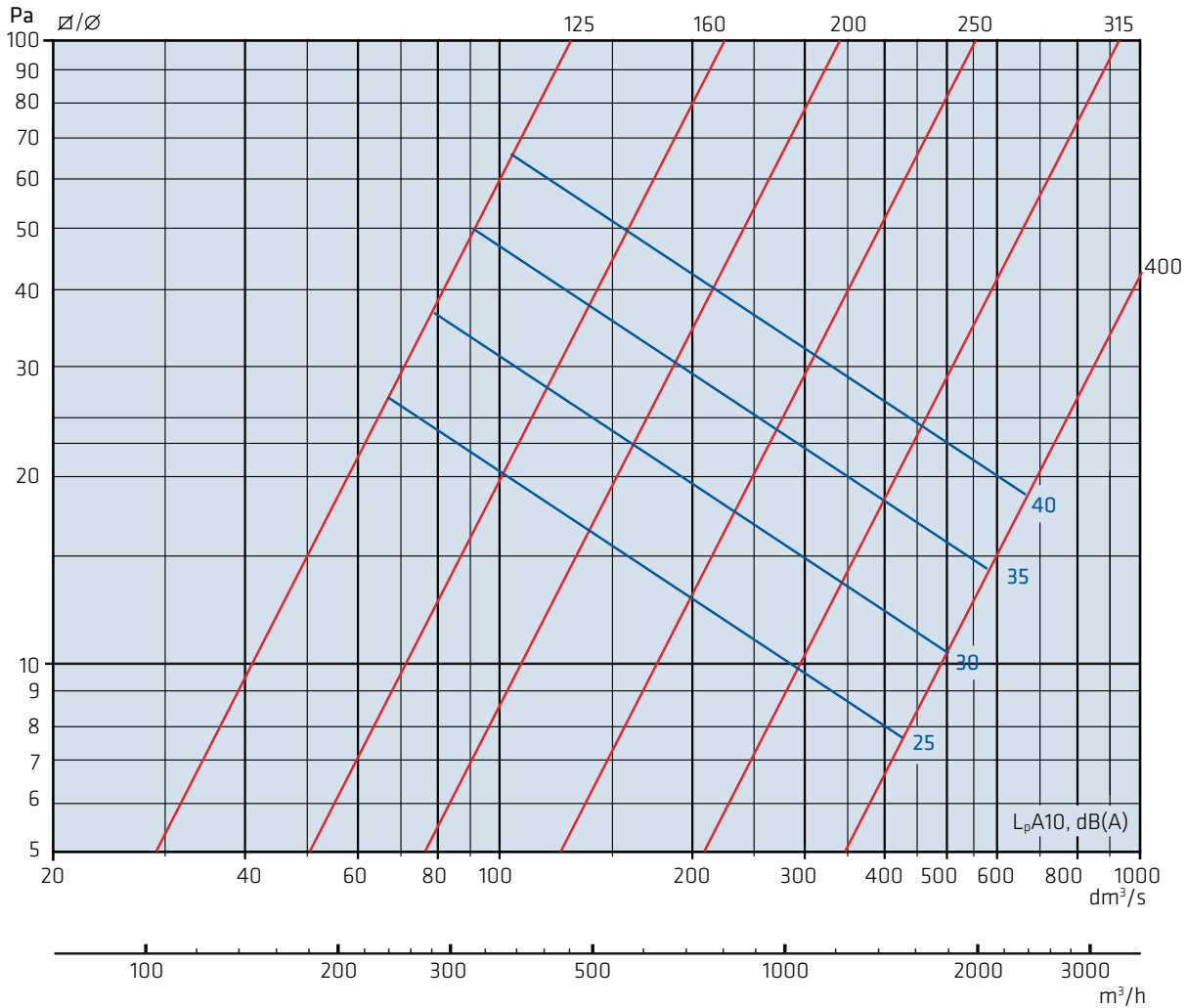


Displacement diffuser DINO-R

Dimensioning

The graphs are not intended for adjustment.

DINO-R 125 - 400

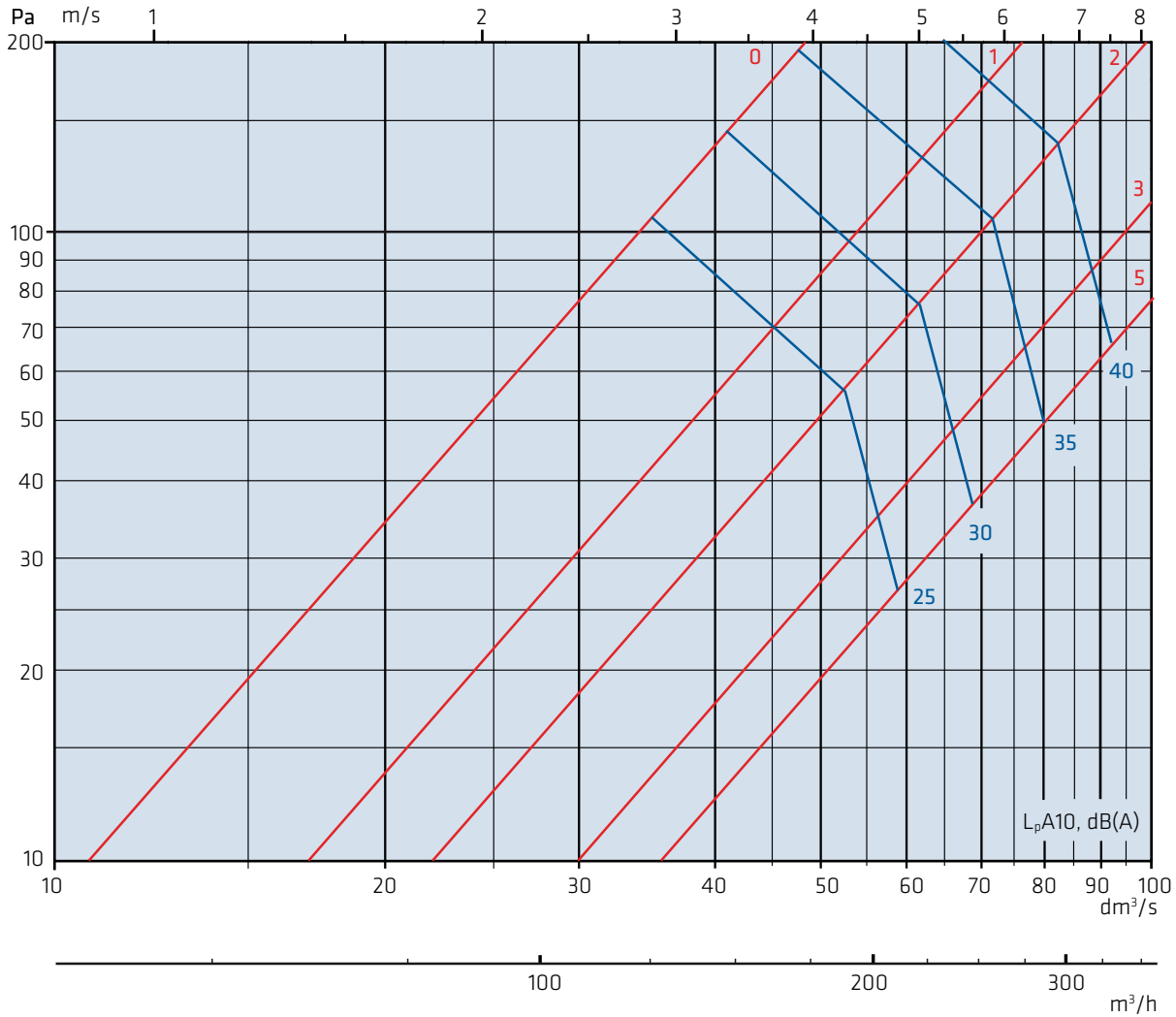


Displacement diffuser DINO-R

Dimensioning

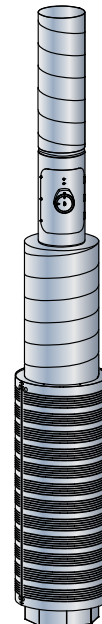
The graphs are not intended for adjustment.

DINO-R 125 + Damper + Sound attenuator



| Sound power level | $L_{w\text{okt}} = L_{pA10} + K$ |
|-------------------|----------------------------------|
| Size | f, Hz 63 125 250 500 1k 2k 4k 8k |
| DINO-R 125 | K, dB 11 7 8 5 -2 -9 -9 -9 |

| Sound attenuation | |
|-------------------|---|
| Size | f, Hz 63 125 250 500 1k 2k 4k 8k |
| DINO-R 125 | ΔL , dB 18 13 8 2 5 4 5 8 |
| DINO-R 125 + SA | ΔL , dB 17 17 14 18 31 20 19 17 |

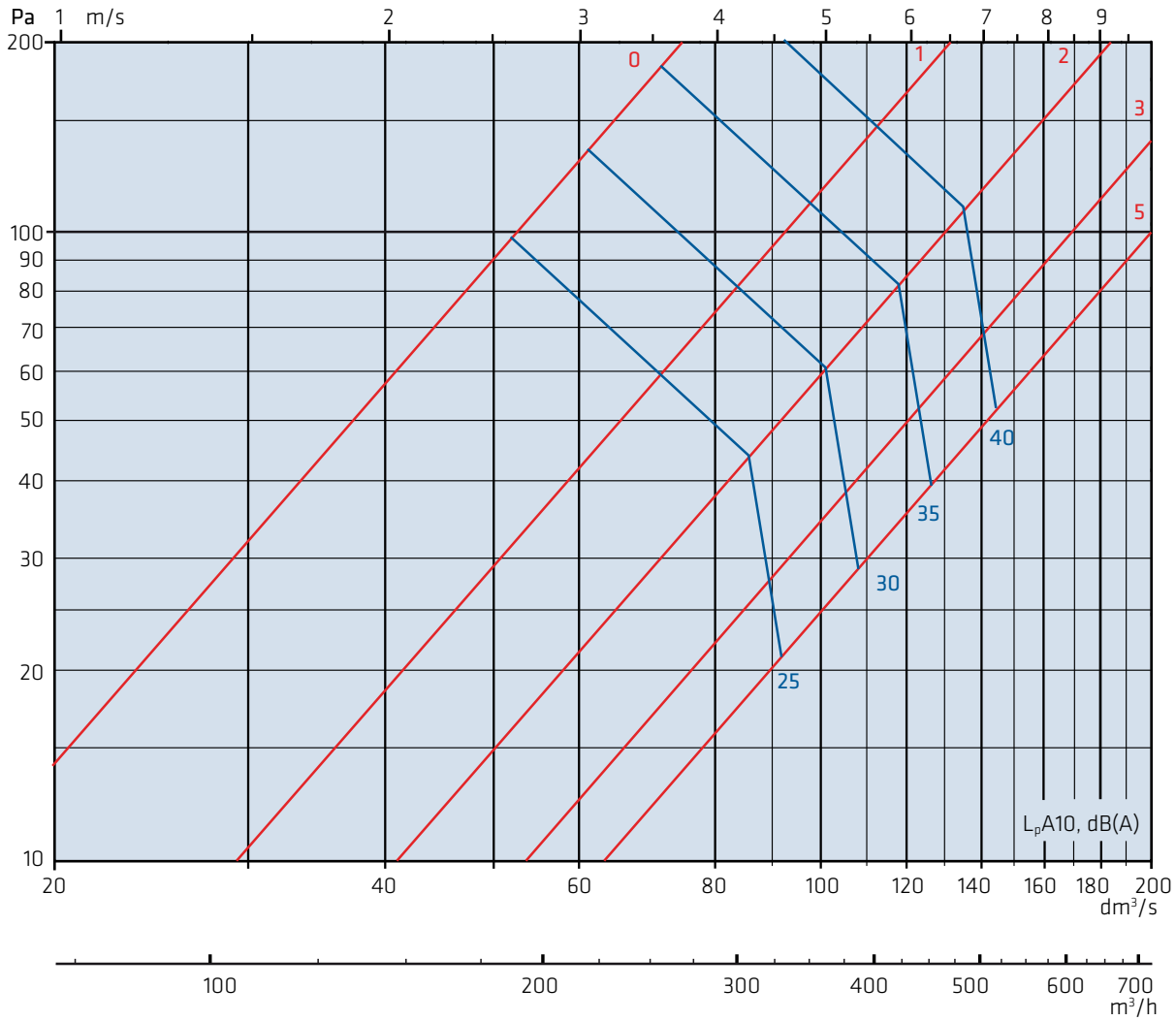


Displacement diffuser DINO-R

Dimensioning

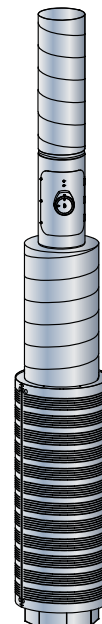
The graphs are not intended for adjustment.

DINO-R 160 + Damper + Sound attenuator



| Sound power level | $L_{w\text{okt}} = L_{pA10} + K$ |
|-------------------|----------------------------------|
| Size | f, Hz 63 125 250 500 1k 2k 4k 8k |
| DINO-R 160 | K, dB 10 6 7 4 -3 -9 -11 -10 |

| Sound attenuation | |
|-------------------|---|
| Size | f, Hz 63 125 250 500 1k 2k 4k 8k |
| DINO-R 160 | ΔL , dB 17 12 6 1 5 3 5 7 |
| DINO-R 160 + SA | ΔL , dB 16 17 15 18 31 20 19 17 |

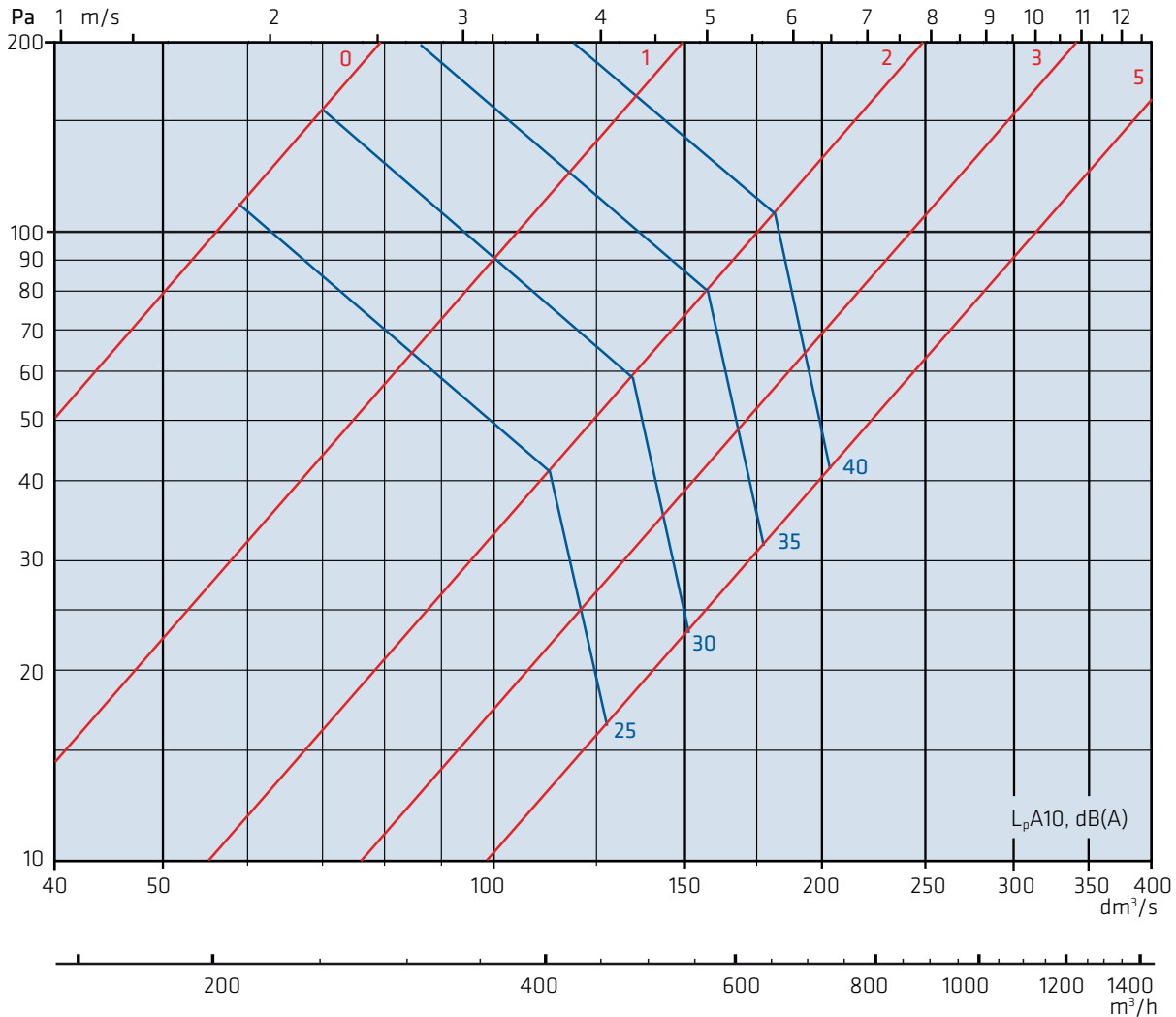


Displacement diffuser DINO-R

Dimensioning

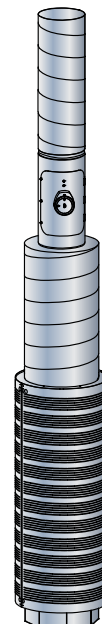
The graphs are not intended for adjustment.

DINO-R 200 + Damper + Sound attenuator



| Sound power level | | $L_{w\text{okt}} = L_{pA10} + K$ | | | | | | | |
|-------------------|-------|----------------------------------|-----|-----|-----|----|-----|-----|-----|
| Size | f, Hz | 63 | 125 | 250 | 500 | 1k | 2k | 4k | 8k |
| DINO-R 200 | K, dB | 8 | 6 | 7 | 3 | -3 | -10 | -13 | -11 |

| Sound attenuation | | | | | | | | | |
|-------------------|-----------------|----|-----|-----|-----|----|----|----|----|
| Size | f, Hz | 63 | 125 | 250 | 500 | 1k | 2k | 4k | 8k |
| DINO-R 200 | ΔL , dB | 16 | 11 | 5 | 0 | 4 | 3 | 4 | 6 |
| DINO-R 200 + SA | ΔL , dB | 15 | 15 | 13 | 17 | 29 | 18 | 17 | 16 |

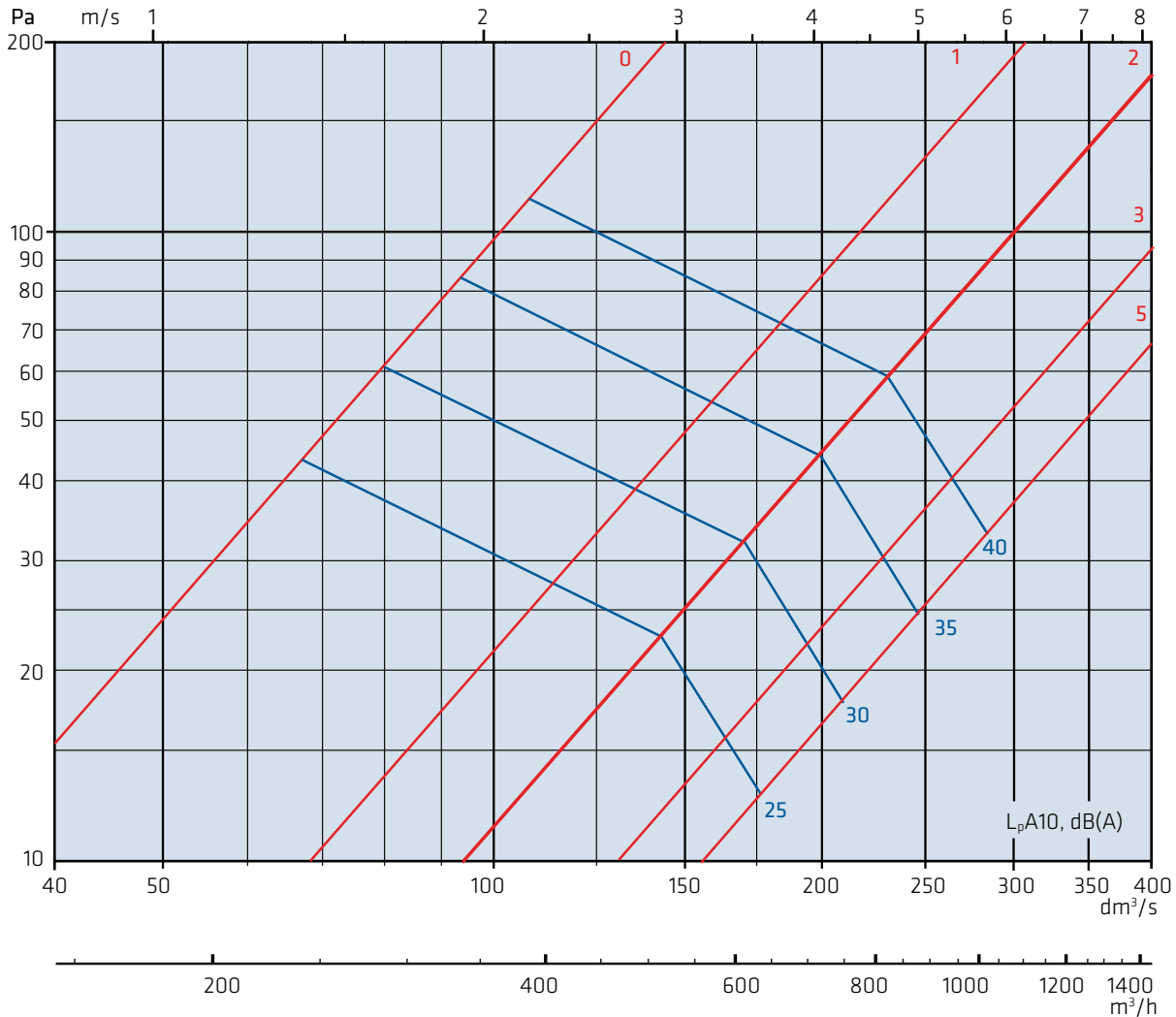


Displacement diffuser DINO-R

Dimensioning

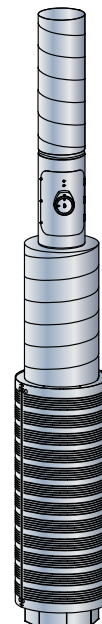
The graphs are not intended for adjustment.

DINO-R 250 + Damper + Sound attenuator



| Sound power level | | $L_{w\text{okt}} = L_{pA10} + K$ | | | | | | | |
|-------------------|-------|----------------------------------|-----|-----|-----|----|-----|-----|-----|
| Size | f, Hz | 63 | 125 | 250 | 500 | 1k | 2k | 4k | 8k |
| DINO-R 250 | K, dB | 6 | 6 | 7 | 3 | -3 | -10 | -13 | -14 |

| Sound attenuation | | | | | | | | | |
|-------------------|-----------------|----|-----|-----|-----|----|----|----|----|
| Size | f, Hz | 63 | 125 | 250 | 500 | 1k | 2k | 4k | 8k |
| DINO-R 250 | ΔL , dB | 14 | 11 | 3 | 0 | 2 | 1 | 3 | 4 |
| DINO-R 250 + SA | ΔL , dB | 13 | 13 | 10 | 14 | 22 | 15 | 12 | 14 |

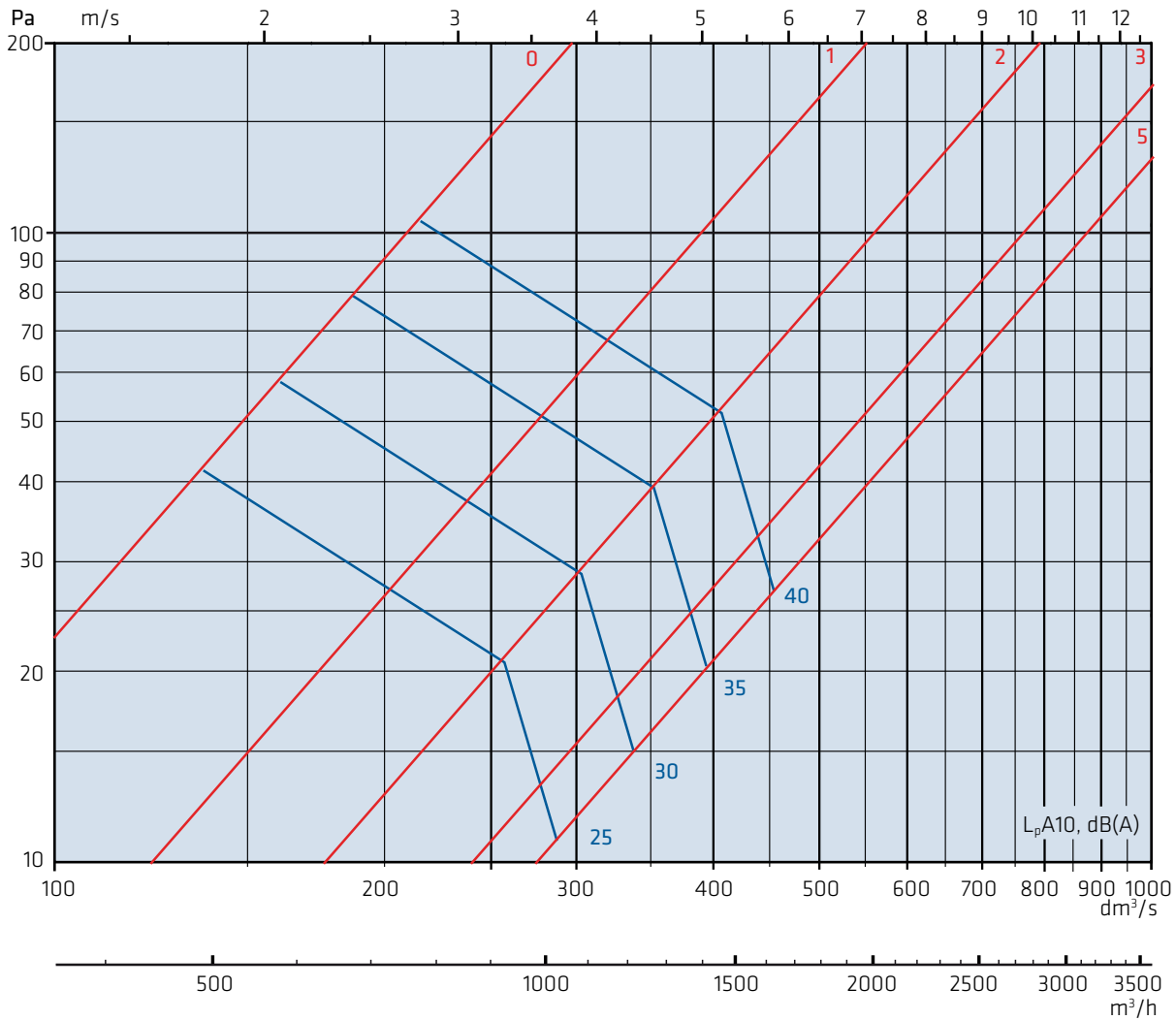


Displacement diffuser DINO-R

Dimensioning

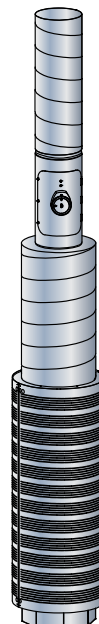
The graphs are not intended for adjustment.

DINO-R 315 + Damper + Sound attenuator



| Sound power level | $L_{w\text{okt}} = L_{pA10} + K$ |
|-------------------|----------------------------------|
| Size | f, Hz 63 125 250 500 1k 2k 4k 8k |
| DINO-R 315 | K, dB 1 5 7 3 -3 -10 -15 -22 |

| Sound attenuation | |
|-------------------|--------------------------------------|
| Size | f, Hz 63 125 250 500 1k 2k 4k 8k |
| DINO-R 315 | ΔL , dB 12 7 2 0 0 1 3 3 |
| DINO-R 315 + SA | ΔL , dB 12 10 7 9 16 13 9 12 |

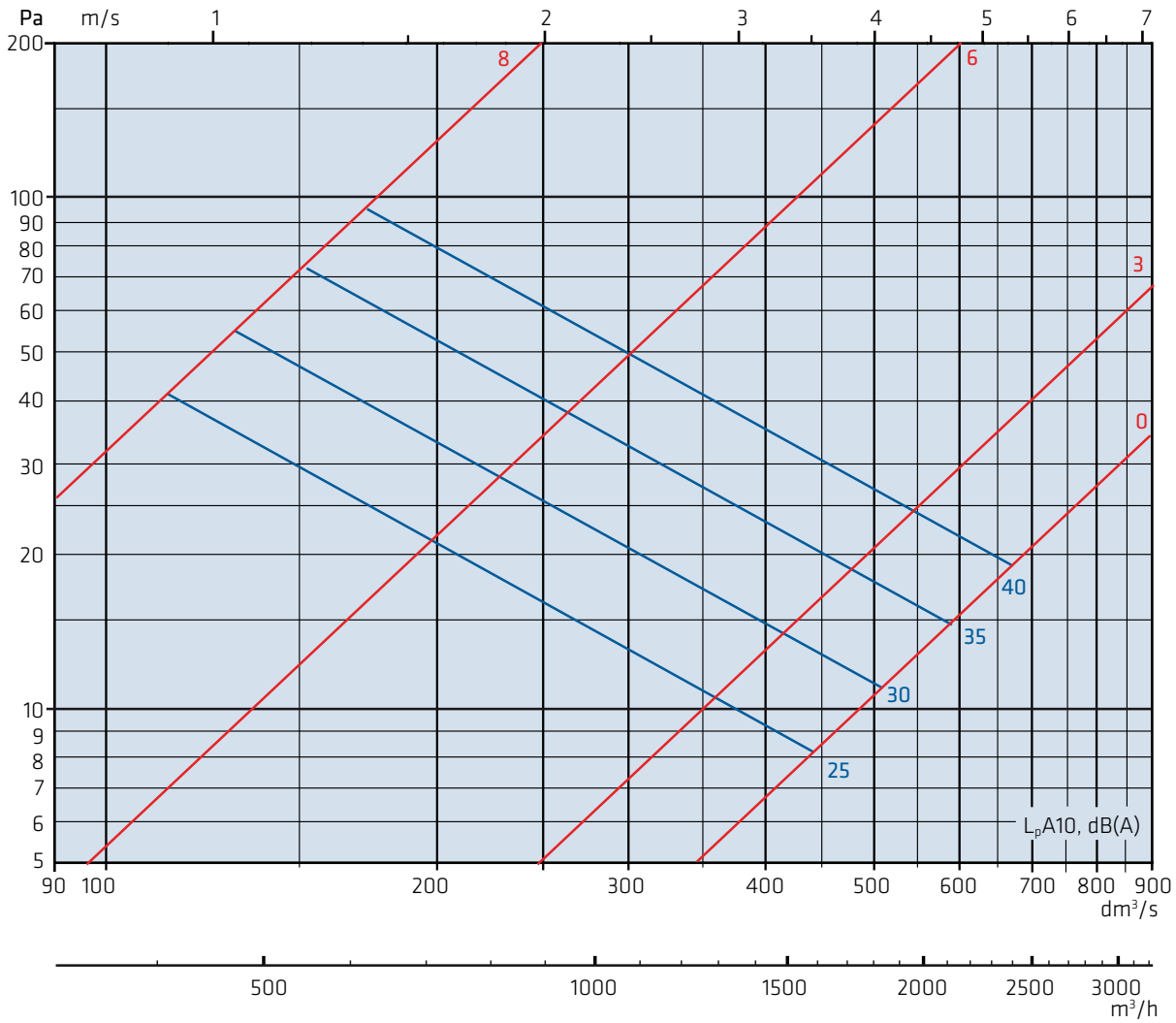


Displacement diffuser DINO-R

Dimensioning

The graphs are not intended for adjustment.

DINO-R 400 + Damper + Sound attenuator



| Sound power level | $L_{w\text{okt}} = L_{pA10} + K$ | | | | | | | | |
|-------------------|----------------------------------|----|-----|-----|-----|----|----|-----|-----|
| Size | f, Hz | 63 | 125 | 250 | 500 | 1k | 2k | 4k | 8k |
| DINO-R 400 + SA | K, dB | 0 | 4 | 6 | 2 | -2 | -9 | -15 | -23 |

| Sound attenuation | | | | | | | | | |
|-------------------|-----------------|----|-----|-----|-----|----|----|----|----|
| Size | f, Hz | 63 | 125 | 250 | 500 | 1k | 2k | 4k | 8k |
| DINO-R 400 + SA | ΔL , dB | 10 | 5 | 1 | -1 | -1 | 0 | 1 | 2 |
| DINO-R 400 + SA | ΔL , dB | 11 | 9 | 5 | 8 | 14 | 11 | 8 | 10 |

