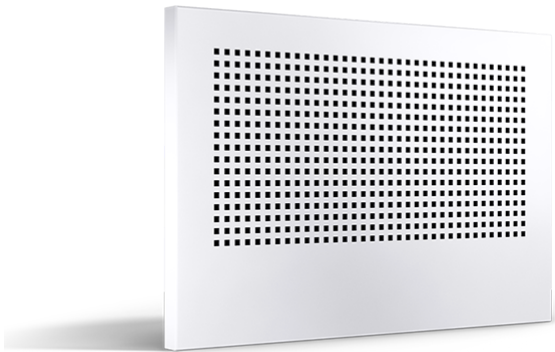


FINO supply air diffuser



FINO supply air diffuser

Stylish FINO supply air diffuser is suitable for low airflows, such as residential, office and hotel ventilation. Its extremely low structural height and stylish design make FINO the best choice for spaces of modern look. FINO combines smooth surface and simple design with good mixing ratio and accurate adjustment.

Duct sizes

Ø100-160

Installation method

Utanpåliggande

Installation

For wall installation

Description

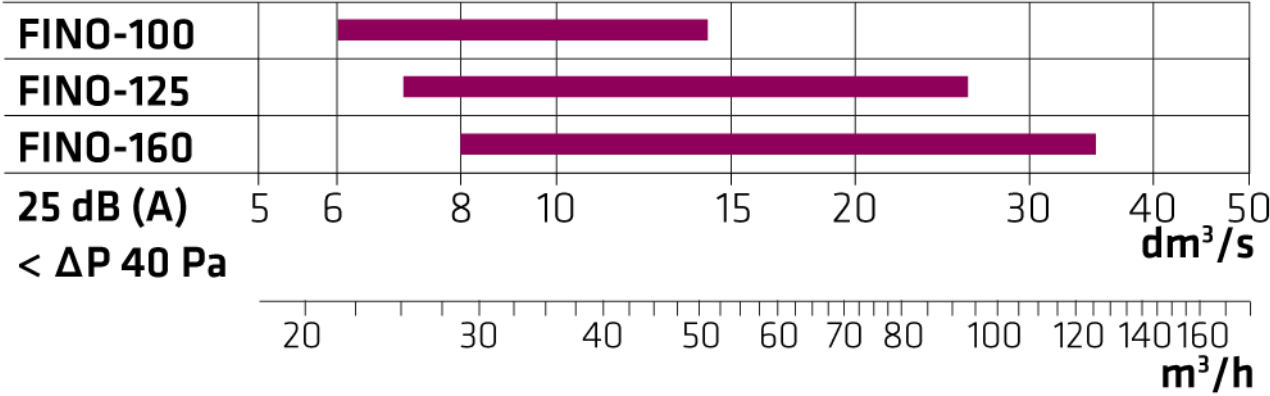
FINO supply air diffuser is the lowest in the Climecon range, only 12 mm deep. Its clear, simple design fits in well with modern interior styles while allowing virtually limitless possibilities in more traditional interiors.

FINO's standard small rectangular perforation gives it a highly styled appearance while fading it into the wall surface.

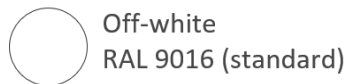
Properties:

- Suitable for low airflows
- Smooth surface and stylish design, easy to keep clean
- Good mixing ratio
- Reliable measurement, accurate adjustment
- Extremely low structural height
- Sizes 100-160 mm
- The collection offers a wide range of air flow rates

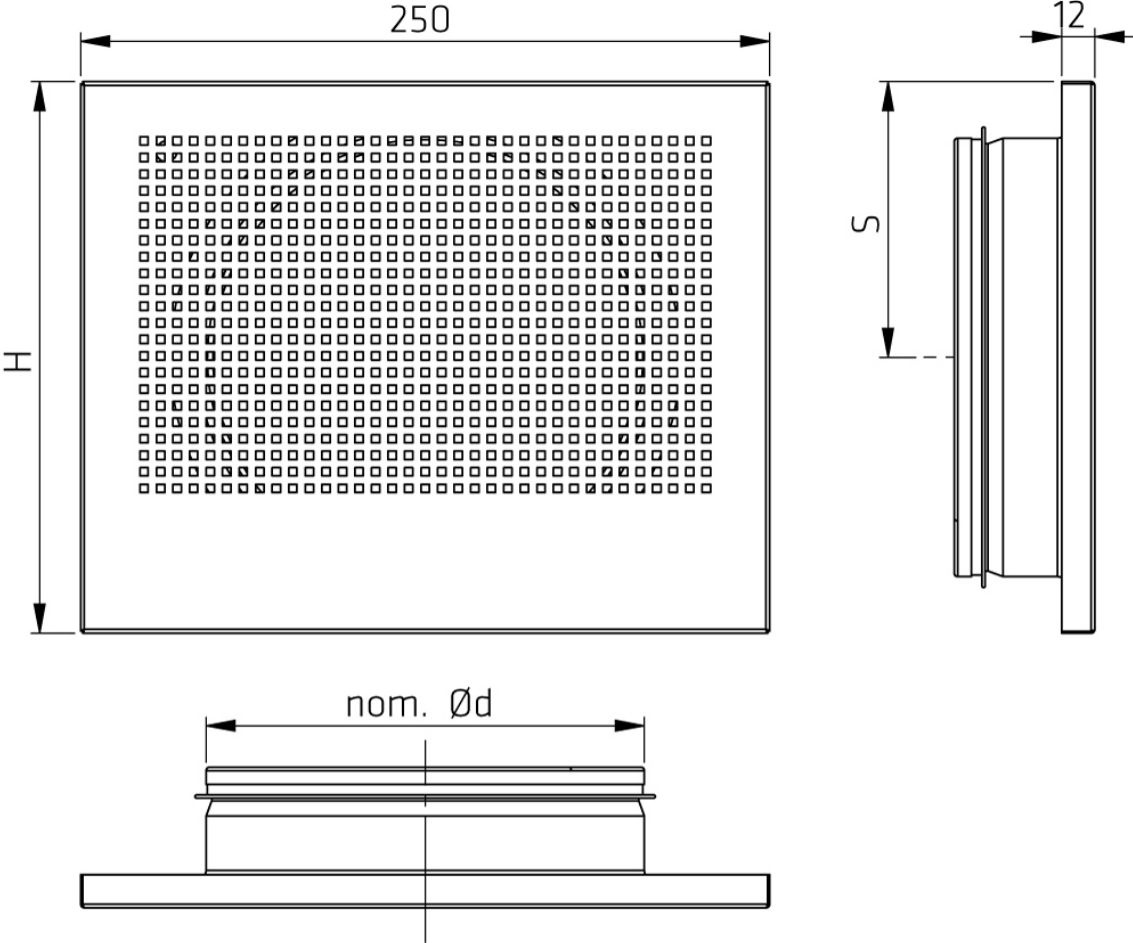
Quick selection guide



Color options



FINO dimensions



FINO	nom. $\varnothing d$	H	S
100	100	140	65
125	125	170	80
160	160	200	100

Selection diagram

The graph is not intended for adjustment.

FINO-100

FINO supply air diffuser

FINO-160

FINO supply air diffuser

Throw pattern and throw length

Throw pattern

Throw length

FINO supply air diffuser

Sound attenuation

Sound level will increase if cover distance is below $3 \times \varnothing d$:

- after bend +4 dB (A)
- after T joint +8 dB (A)

Airborne sound insulation

Sound attenuation for air ducts between rooms $D_{n,e,w}$ dB

Supply air

READ MORE ABOUT VAL DAMPER PLENUM BOX

READ MORE ABOUT VAM DAMPER PLENUM BOX

FINO supply air diffuser
