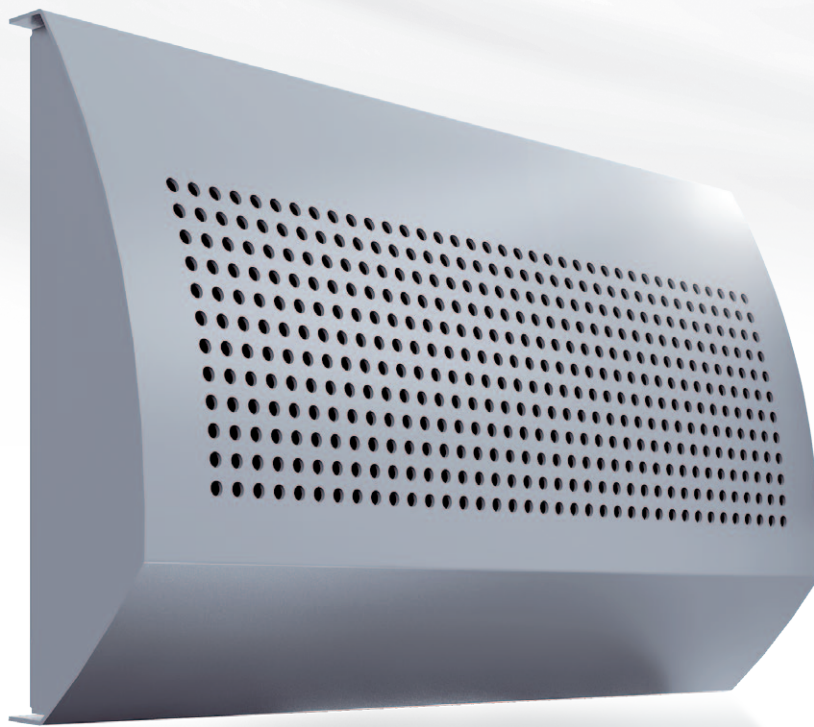




Indoor climate specialist



## TINO

The stylish TINO series includes a wide range of supply air diffusers, all with an excellent mixing ratio.

# TINO

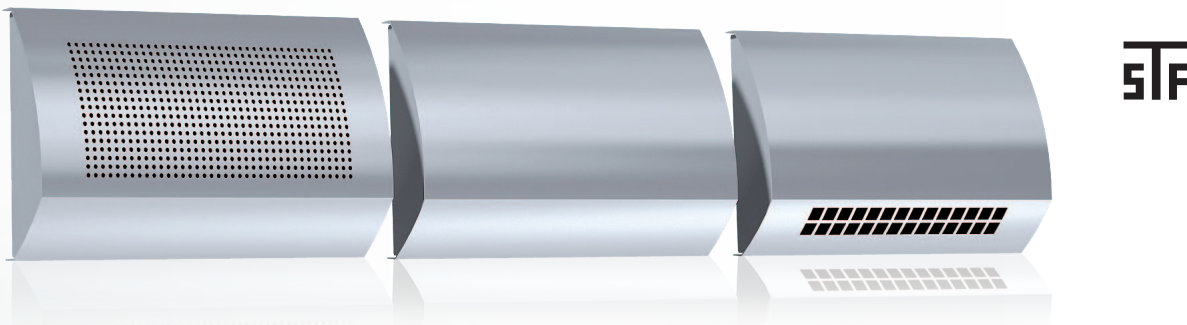
Its versatile installation options make the TINO series ideal for many types of ventilation solutions. It becomes part of the interior in the same way as a wall lamp or audio centre, so you can view it as an interior design element. TINO is an inconspicuous part of your home ventilation.

The TINO series includes a wide range of supply air diffusers, all with an excellent mixing ratio up to duct size Ø200 mm. TINO diffusers can even be installed further away from the surface of the ceiling without causing a feeling of draught.

Fire safety is an important property in ventilation terminal devices. All Climecon products are made of sheet steel, making them as safe in a fire as possible. Thanks to the sheet steel structure, TINO does not burn, which improves fire safety and increases evacuation time by limiting the uncontrolled spreading of combustion gases from one room to another.

# TINO

The **TINO** series includes the similarly designed exhaust air vent **TINOi** and a blind design element **TINO-0**. TINO is a perfect choice if you want to have the same design in rooms of different sizes and for varying air volumes. The construction height of the series is very low, and it features reliable measurement combined with quick and precise adjustment



## Colours

Standard colour:



Pure white  
RAL 9016

Also available in these colours:



White  
RAL 9010



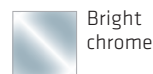
Black  
RAL 9005



White aluminium  
RAL 9006

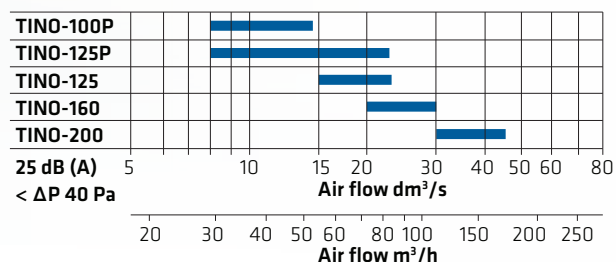


Grey aluminium  
RAL 9023+9007

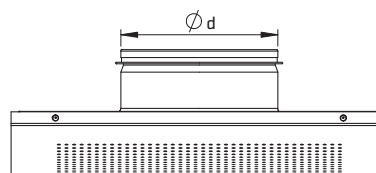
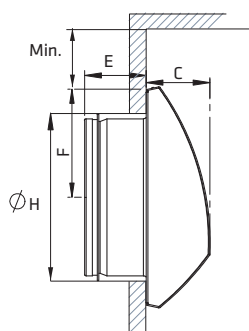
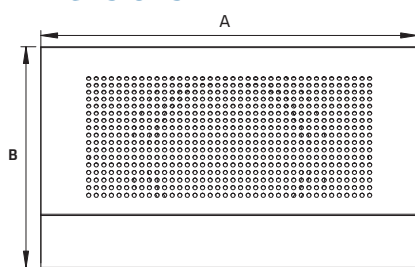


Bright chrome

## Quick guide



## Dimensions



Supply air diffusers

Model	Ød	ØH	AxB	C	E	F	Min Weight, kg
TINO-100P	100	125	255x150	42	45	68	0,7
TINO-125P	125	150	297,5x175	50	45	80,5	0,9
TINO-125	125	140	297,5x175	50	45	80,5	0,9
TINO-160	160	175	357x210	62	45	98	1,3
TINO-200	200	215	425x250	76,5	45	118	1,7



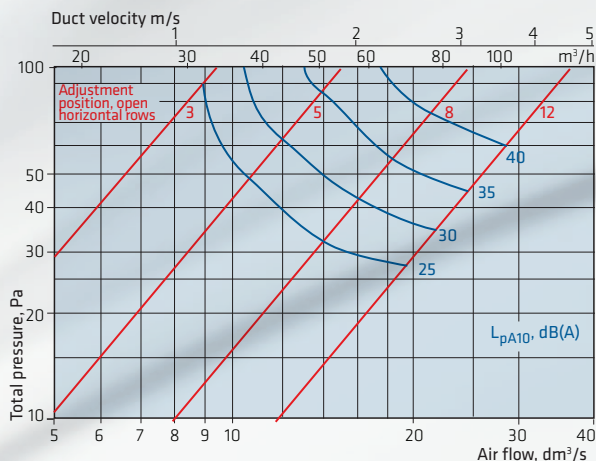
TINO-D is designed for use with flexible plastic ducts. Connections 2xØ75. Other dimensions same as TINO-100.



# Dimensioning

The graphs are not intended for adjustment.

## TINO-100P



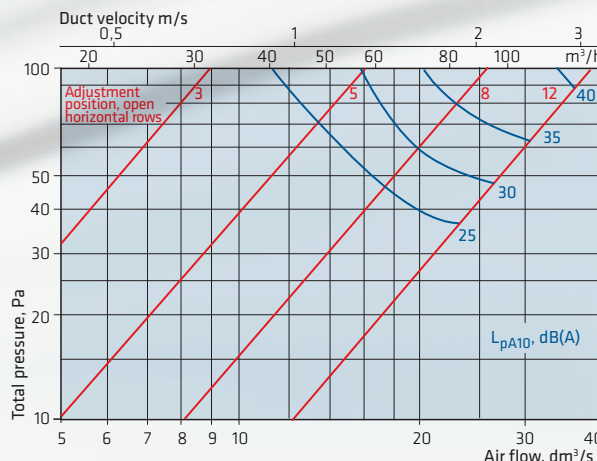
**Sound power level**  $L_{w\text{okt}} = L_{pA10} + K$

Size	f, Hz	63	125	250	500	1k	2k	4k	8k
<b>TINO-100P</b>	K, dB	-7	-5	-3	-1	2	-6	-15	-19

**Sound attenuation**

Size	f, Hz	63	125	250	500	1k	2k	4k	8k
<b>TINO-100P</b>	$\Delta L$ , dB	22	16	11	5	-1	4	2	3

## TINO-125P



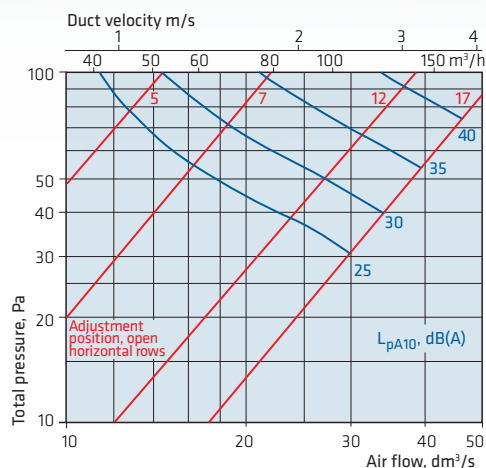
**Sound power level**  $L_{w\text{okt}} = L_{pA10} + K$

Size	f, Hz	63	125	250	500	1k	2k	4k	8k
<b>TINO-125P</b>	K, dB	-14	-4	-4	-1	1	-6	-9	-12

**Sound attenuation**

Size	f, Hz	63	125	250	500	1k	2k	4k	8k
<b>TINO-125P</b>	$\Delta L$ , dB	19	14	9	1	3	4	3	4

## TINO-125



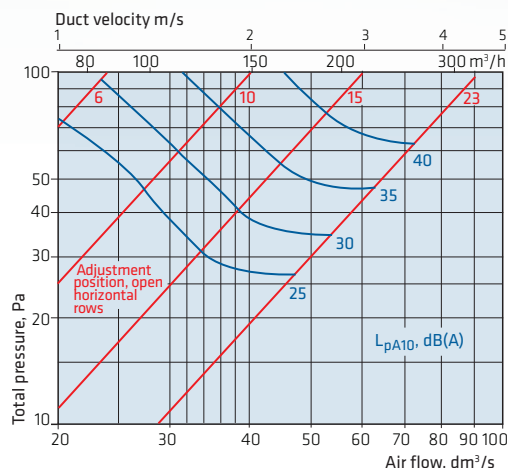
**Sound power level**  $L_{w\text{okt}} = L_{pA10} + K$

Size	f, Hz	63	125	250	500	1k	2k	4k	8k
<b>TINO-125</b>	K, dB	-11	-4	-4	-1	2	-6	-12	-16

**Sound attenuation**

Size	f, Hz	63	125	250	500	1k	2k	4k	8k
<b>TINO-125</b>	$\Delta L$ , dB	20	14	9	1	1	2	2	2

## TINO-160



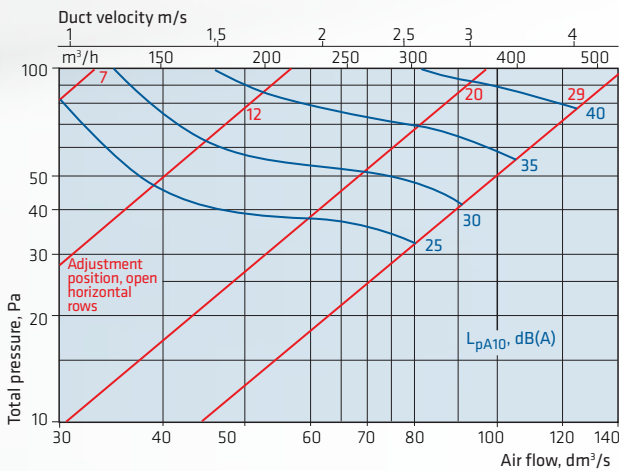
**Sound power level**  $L_{w\text{okt}} = L_{pA10} + K$

Size	f, Hz	63	125	250	500	1k	2k	4k	8k
<b>TINO-160</b>	K, dB	-6	-3	-1	2	0	-5	-14	-16

**Sound attenuation**

Size	f, Hz	63	125	250	500	1k	2k	4k	8k
<b>TINO-160</b>	$\Delta L$ , dB	18	12	6	2	3	2	2	2

## TINO-200



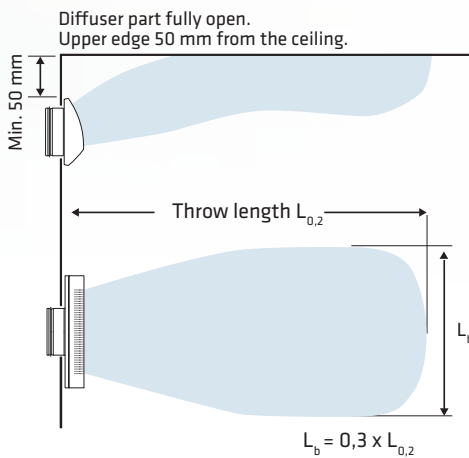
Sound power level  $L_{w\text{okt}} = L_{pA10} + K$

Size	f, Hz	63	125	250	500	1k	2k	4k	8k
TINO-200	K, dB	-2	-4	0	3	2	-4	-9	-10

Sound attenuation

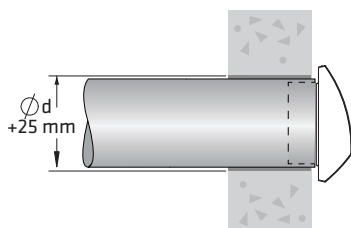
Size	f, Hz	63	125	250	500	1k	2k	4k	8k
TINO-200	$\Delta L$ , dB	15	10	4	0	2	2	2	2

## Throw pattern

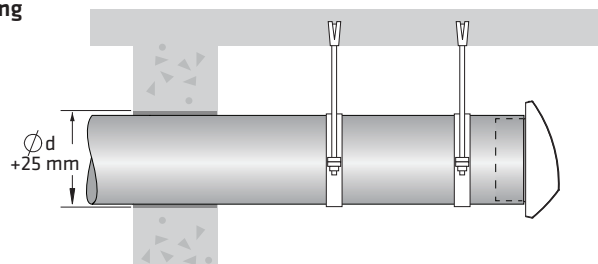


## Installation examples

### 1. Wall mounting

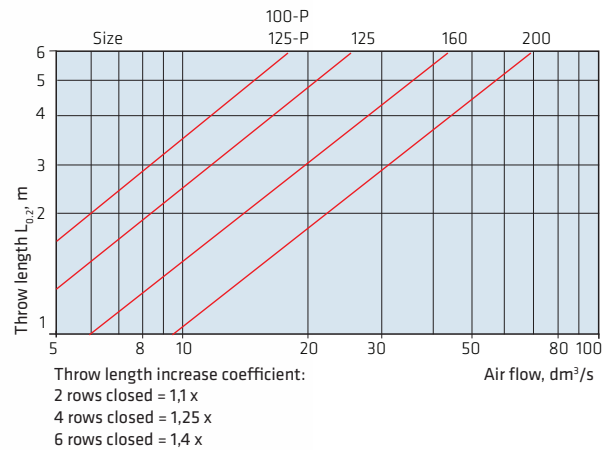


### 2. Duct mounting



Installation details in separate mounting instructions delivered with the product, or at [www.climecon.fi](http://www.climecon.fi)

## Throw length



## Airborne sound insulation

Sound attenuation for air ducts between rooms  $D_{n,e,w}$  dB

Supply air

Size	TINO	TINO+VAL	TINO+VAM
100	41	60	60
125	41	65	60
160	41	62	56
200	41	59	62

VAL is a dampening box with angular air flow.  
VAM is a dampening box with straight-through air flow.

## Sound attenuation

Sound level will increase if cover distance is below  $3 \times \phi d$ :

- after bend +4 dB (A)
- after T joint +8 dB (A)

